

US TYPE FLOOR HINGES

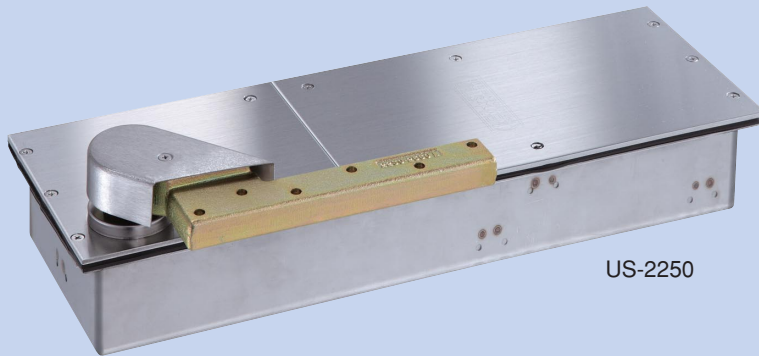
Patent No. 5174614

USH-1300

US-2000



USH-1300

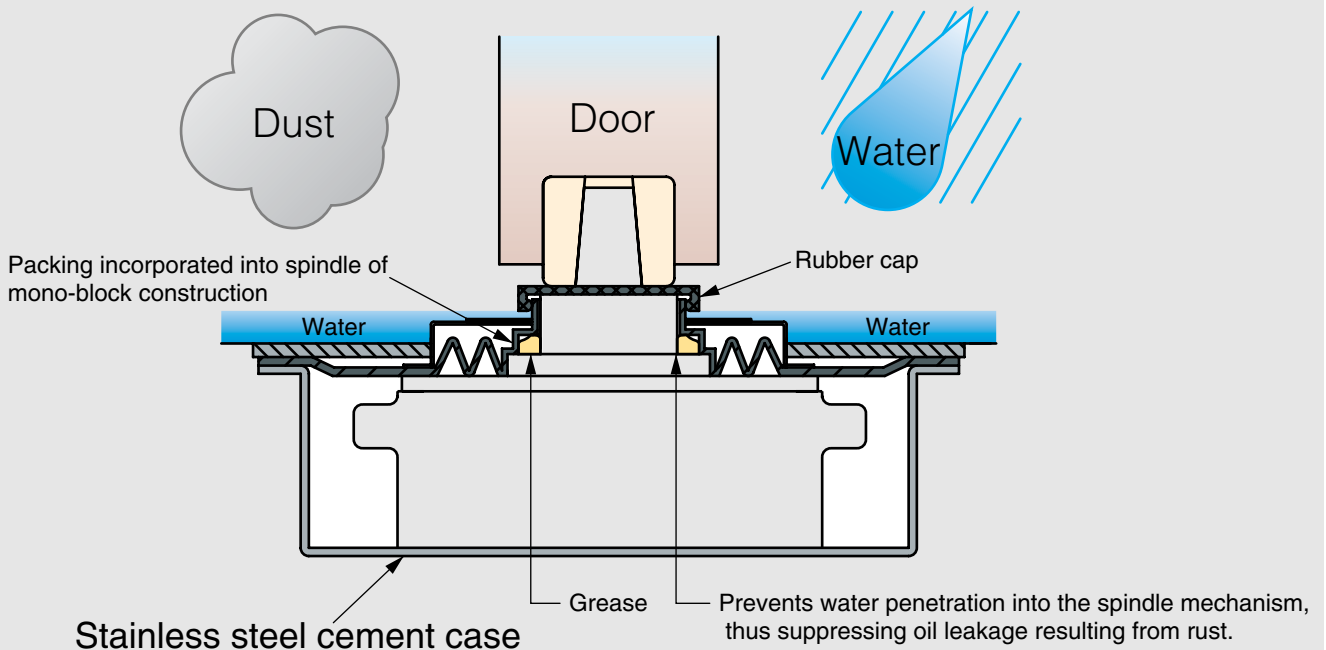


US-2250

- Adopts a stainless steel cement case.
- Incorporates a rubber cap, thus preventing water penetration from the spindle.
- Provided with packing incorporated into a spindle of mono-block construction equipped with a bellows mechanism. The packing will not be deformed with the unit moved or adjusted, which prevents water penetration. (USH-1300 Series)
- Adopts rubber-welding screws, thus preventing water penetration from the screw holes. (US-2000 Series)

No water penetration when the unit is submerged. *
(on the condition that the water surface is 5 mm above the upper surface of the floor plate)

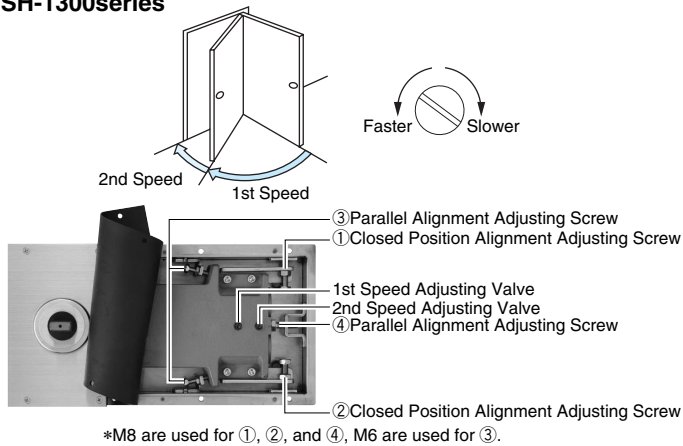
*Tested in-house.



Adjustment Procedure

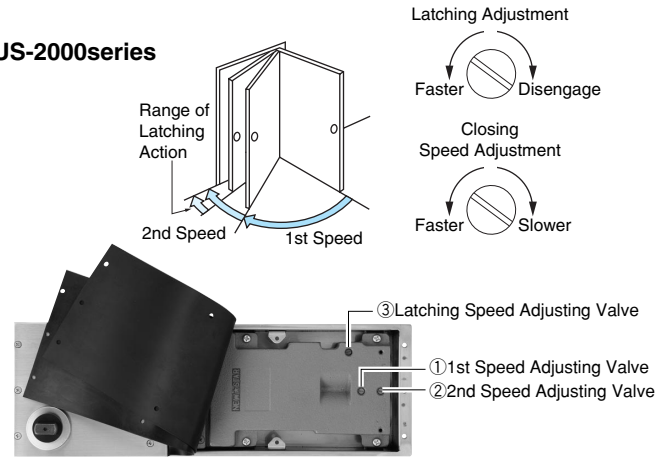
Closing Speed Adjustment

USH-1300series



*M8 are used for ①, ②, and ④, M6 are used for ③.

US-2000series

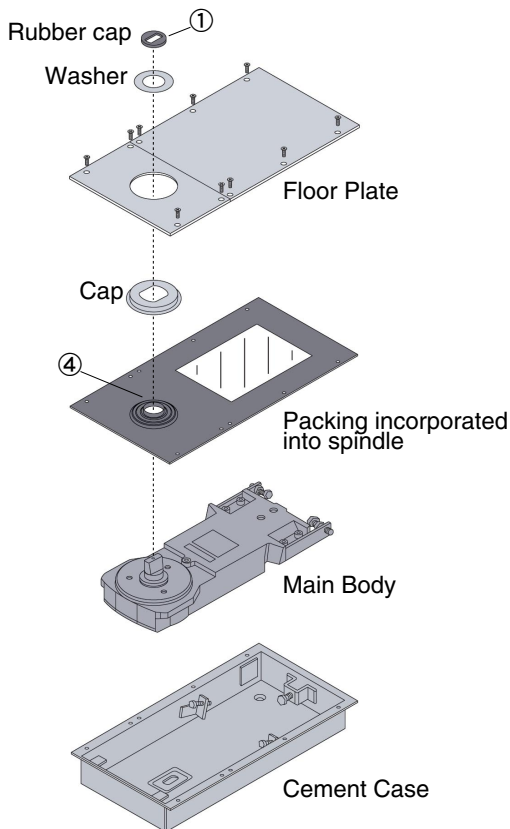


*Unlike the 2000 Series, the US-2000 Series does not allow hold-open switching with the door suspended.
When ordering, specify the product with or without the hold-open function.

Construction

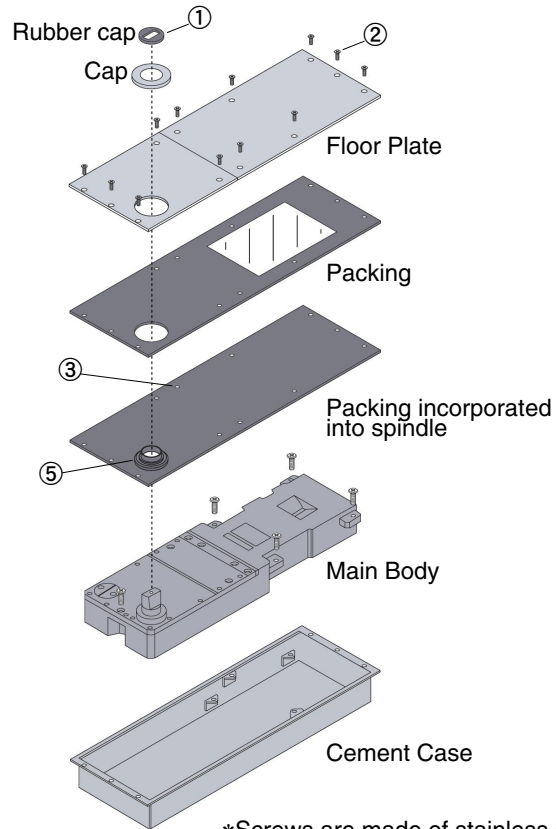
USH-1300

(Center-Hung Inward and Outward Opening)

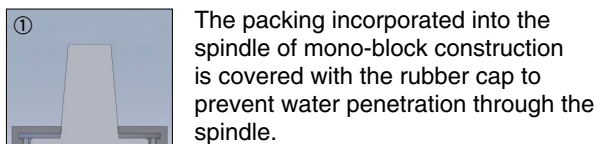


US-2000

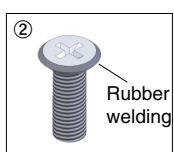
(Offset Spindle, Offset-Hung One-side Opening)



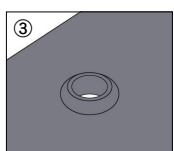
*Screws are made of stainless steel.



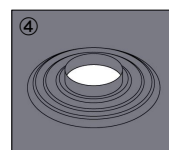
① The packing incorporated into the spindle of mono-block construction is covered with the rubber cap to prevent water penetration through the spindle.



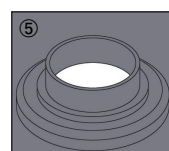
② Rubber is welded to the stainless steel screws, thus preventing water penetration through the screw holes.



③ The packing is provided with a round projection to prevent water penetration.



④ Provided with packing incorporated into the spindle of mono-block construction equipped with a bellows mechanism. The packing will not be deformed with the unit moved or adjusted, which does not make any clearance, thus preventing water penetration.



⑤ The use of the packing incorporated into the spindle of mono-block construction does not make any clearance, thus preventing water penetration.

■ Specification Comparison

	Standard Type	US Type floor hinge	Standard Type	US Type floor hinge
	H-1300Series	USH-1300Series	2000Series	US-2000Series
Rubber cap	—	NBR	—	NBR
Washer	—	Stainless	—	—
Floor Plate	Stainless	Stainless	Stainless	Stainless
Cap	Stainless	Stainless	Stainless	Stainless
Packing	—	—	—	NBR
Packing incorporated into spindle	—	NBR	—	NBR
Main Body	Steel	Steel	Steel	Steel
Cement Case	Steel	Stainless	Steel	Stainless
Screws	Steel	Stainless	Steel	Stainless

■ Lineup of US Type Floor Hinge

● Center-Hung, Inward and Outward Opening

Model Number		Applicable Door Dimensions DW×DH mm	Maximum Door Weight kg	Remarks
Without Hold-open	With Hold-open			
USH-1300	USHS-1300	950×2100	110	For Regular Door
USH-1400	USHS-1400	1050×2400	185	
USH-1300 ZII	USHS-1300 ZII	950×2100	110	
USH-1400 ZII	USHS-1400 ZII	1050×2400	185	

(Note) ● Floor hinges for stone-tile flooring are available as well.

● Offset Spindle, Offset-Hung One-side Opening (*Specify hand when ordering)

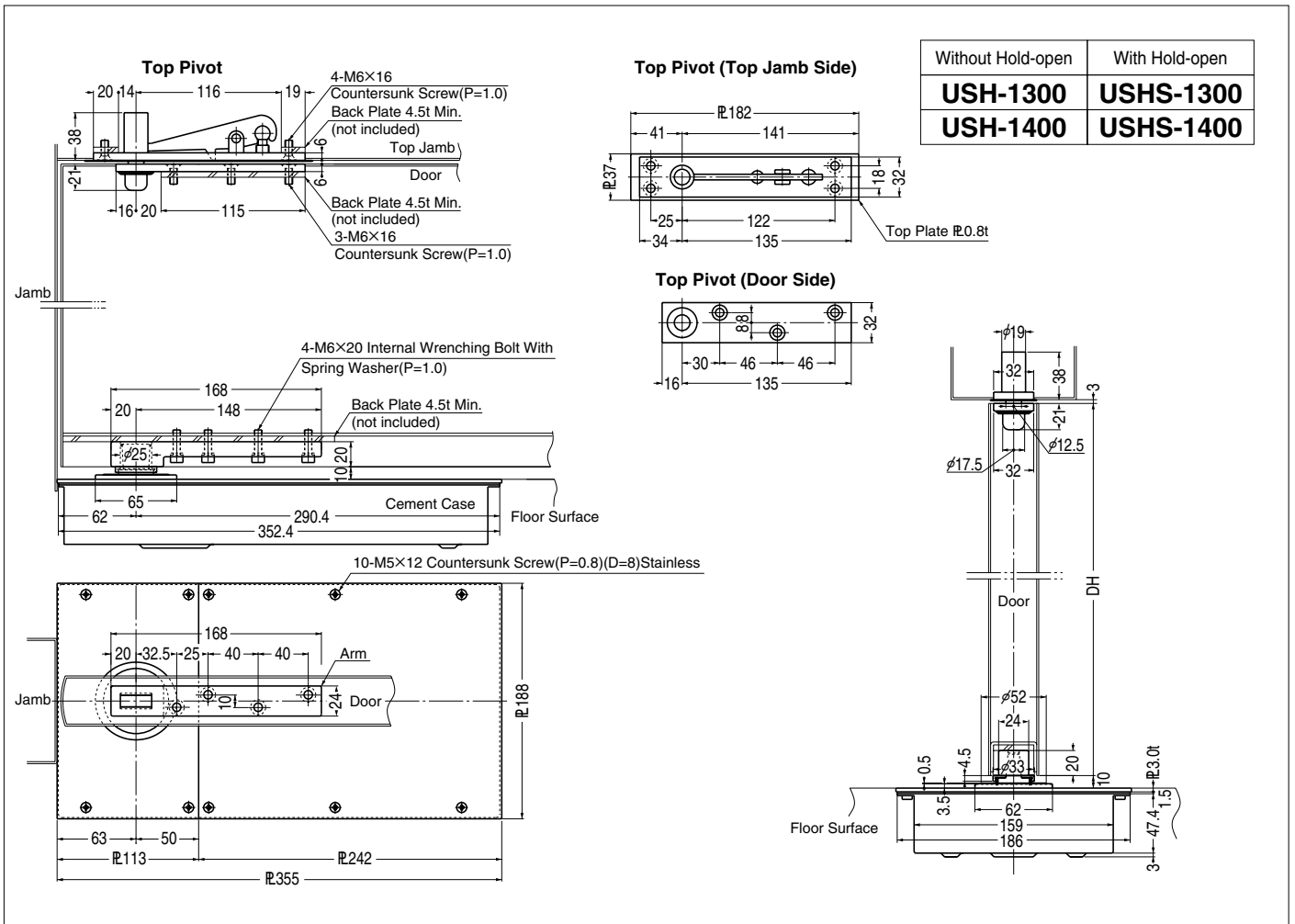
Model Number		Applicable Door Dimensions DW×DH mm	Maximum Door Weight kg	Remarks
Without Hold-open	With Hold-open			
US-2250	USS-2250	950×2100	70	For Regular Door
US-2350	USS-2350	1050×2400	110	
US-2450	USS-2450	1200×2400	150	
US-2550	USS-2550	1600×2400	180	

(Note) ● Floor hinges for stone-tile flooring are available as well.

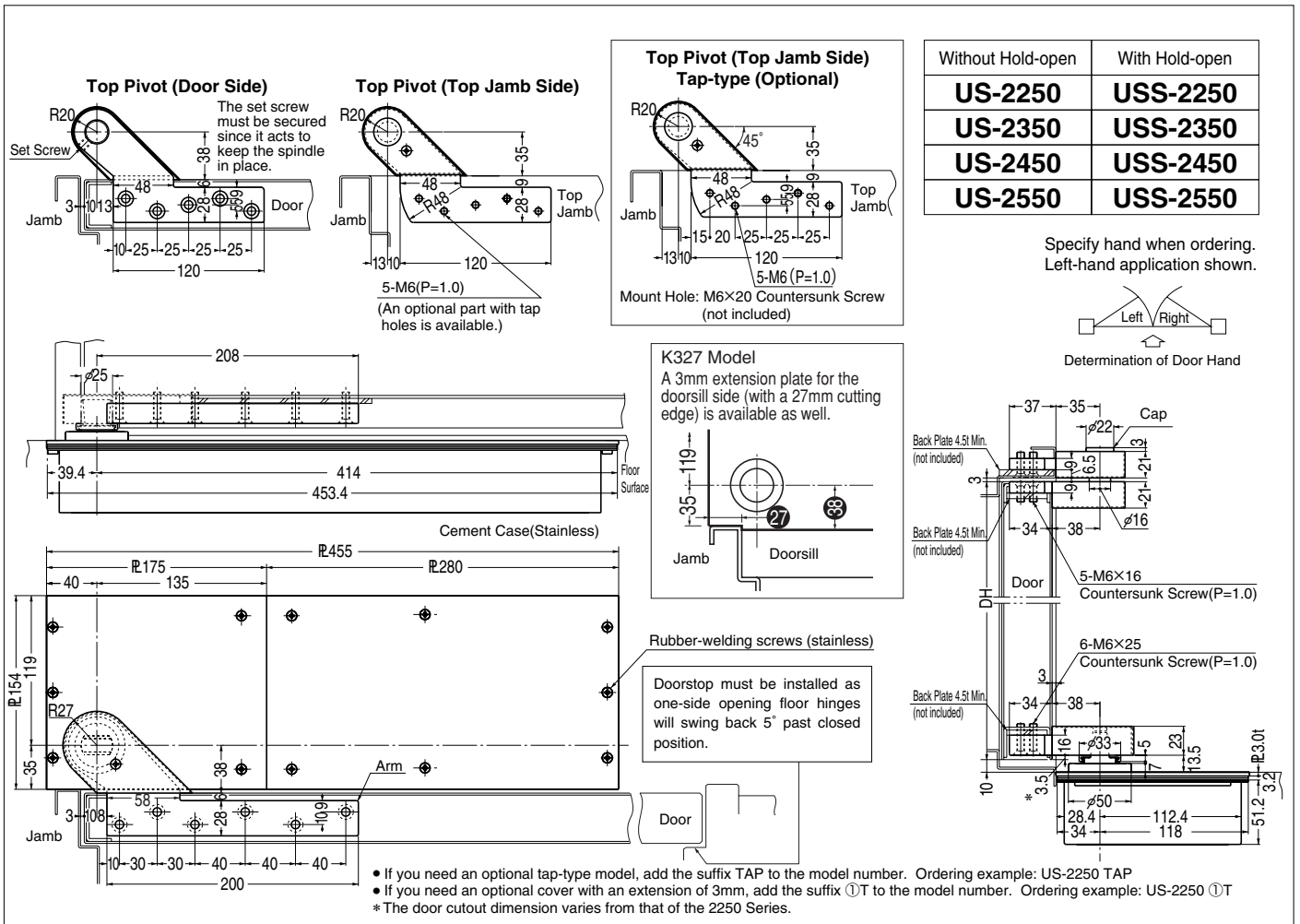
*Unlike the 2000 Series, the stop of US-2000 Series cannot be switched with the door suspended. When ordering, specify the product with or without hold-open.

■ Option

Both top pivot and arm made of stainless steel can be manufactured by order.
Applicable products: USH-1300 (except for the Z model) and US-2000 Series



Without Hold-open	With Hold-open
USH-1300	USHS-1300
USH-1400	USHS-1400



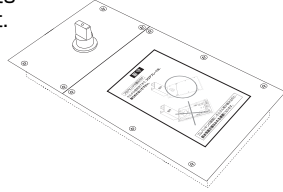
- If you need an optional tap-type model, add the suffix TAP to the model number. Ordering example: US-2250 TAP
- If you need an optional cover with an extension of 3mm, add the suffix ①T to the model number. Ordering example: US-2250 ①T
- * The door cutout dimension varies from that of the 2250 Series.

< Installation Precautions >

Be sure to keep the following precautions in order to demonstrate the waterproof performance of the products.

■ Installation of Floor Hinge

*The following seal is placed onto the floor plate protection sheet.



USH-1300Series

Precautions

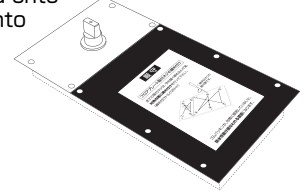
Installation of Floor Hinge

Do not remove the floor plate until the mortar is fixed completely.

The waterproof performance of the product may be adversely affected if mortar or a foreign substance is caught by the clearance between the rubber packing and hinge.

■ Tightening of Floor Plate Mounting Screws

*The following seal is placed onto the packing incorporated into the spindle of mono-block construction.



Precautions

Tightening of Floor Plate Mounting Screws

Tighten all the screws lightly first. Then **tighten then evenly and securely in diagonally opposite sequence.** (Tightening torque: 2N·m)

○ The figures show the tightening order of the screws.

The waterproof performance of the product may be adversely affected unless the rubber packing is in contact evenly with the mating surface.

US-2000Series

Precautions

Installation of Floor Hinge

Do not remove the floor plate until the mortar is fixed completely.

The waterproof performance of the product may be adversely affected if mortar or a foreign substance is caught by the clearance between the rubber packing and hinge.

Precautions

Tightening of Floor Plate Mounting Screws

Tighten all the screws lightly first. Then **tighten then evenly and securely in diagonally opposite sequence.** (Tightening torque: 2N·m)

○ The figures show the tightening order of the screws.

Rubber

*Be sure to use the dedicated screws provided with rubber packing.

The waterproof performance of the product may be adversely affected unless the rubber packing is in contact evenly with the mating surface.