

HAWA CONCEPTA & FOLDING CONCEPTA

NEW GENERATION III



New thinking for new rooms

Hawa and EKU have become Hawa Sliding Solutions. As a global technology and market leader, we discover new applications for sliding every day and make it easier to use. Hawa and EKU products form a complete range of sliding solutions for furnishings, furniture and buildings.

We are the global market and technology leader for sliding on buildings, in buildings and on furniture. Superior product and system solutions inspire our customers and partners in using sliding systems and make them successful. We create new impetus for sliding time and time again with innovative applications, systems and materials.

Ever since Hawa's earliest days, we have always made substantial investments in our production facilities. Our production site is in Mettmennstetten. This is the only way to maintain complete control over our products and to be in a position to react, optimise and invest as circumstances require.

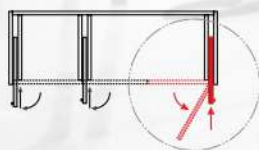
Our self-imposed demand to supply our customers with technically mature products of the highest quality also applies in full to every new development. Many a project does not survive the long and arduous test phase required to turn a new idea into a new Hawa product. The fact that we nonetheless hold more than 100 national and international patents in the markets of every continent is convincing evidence of our innovation.

Our products are exclusively available in Australia and New Zealand from Häfele.

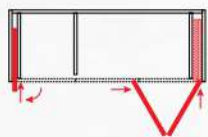
The concept

Furniture doors that pivot, fold and slide in to disappear into astonishingly small parking spaces: this is how to create multi-functional room solutions for the kitchen, home office, washer/dryer combinations, walk-in cabinets and many more applications in next to no time. Especially as the two systems, namely HAWA-Concepta and HAWA-Folding Concepta can be flexibly combined.

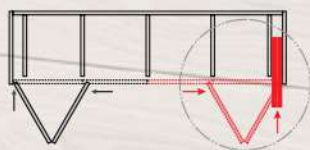
For doors that pivot and slide in sideways
HAWA-Concepta



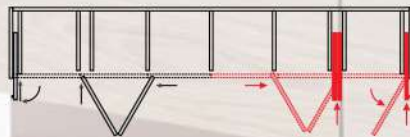
Combination 3-doors
HAWA-Concepta and
HAWA-Folding Concepta



For doors that fold and slide in sideways
HAWA-Folding Concepta



Additional combination options
HAWA-Concepta and
HAWA-Folding Concepta







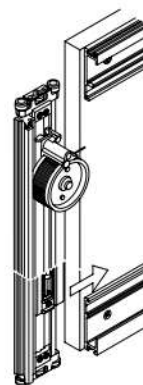
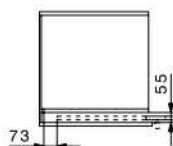
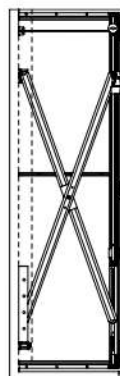
HAWA-Concepta 25/30/40/50

The HAWA-Concepta supports variable space utilisation in two ways:

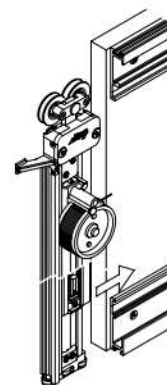
The HAWA-Concepta 25/30 version moves wooden doors up to 30 kg on quiet, rattle-proof guide rollers while the HAWA-Concepta 40/50 equipped with the smooth-running Hawa trolley slides doors weighing up to 50 kg into space-saving recesses. Either way, its ease of installation and impressive adaptability will open up completely new prospects for your cabinets, furniture fronts and walk-in storage solutions.

ABOUT THE PRODUCT

This hardware system offers a huge range of options yet needs only a small amount of space. This is because the doors parked to the side only take up a minimum amount of space inside the cabinet. The soft closing mechanism makes the system all the more user friendly. A range of fastening variants accommodate creative design ideas. And there's no way the HAWA-Concepta could possibly throw you off track: Installation requires no processing other than drilling holes for positioning and for the concealed hinges, as all components are screwed to the intermediate panel and always accessible from the front.

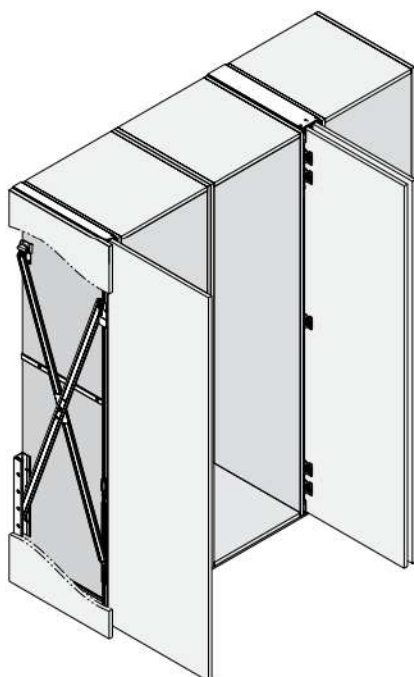


HAWA-Concepta 25/30



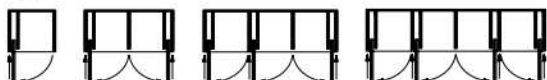
HAWA-Concepta 40/50

HAWA CONCEPTA 25/30/40/50

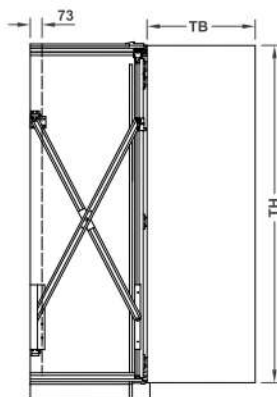


- > Door height (mm): 1250 - 1850 for Concepta 25
1851 - 2300 for Concepta 30
1851 - 2500 for Concepta 40
2301 - 2850 for Concepta 50
- > Door width (mm): 300 - 900
- > Door thickness (mm): Without rebate: 19 - 30, rebated >30 - 50
- > Door weight (kg): 25, 30, 40, or 50
- > Side panel thickness (mm): Cabinet applications ≥ 18
In wall recesses ≥ 30
- > Running gear: 40/50 kg: 2 rollers
- > Running gear guided by: 40/50 kg: Ball bearing mounted, Plastic coated rollers
- > Mounting: For left and right hand use

Application

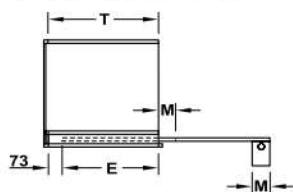


Door size calculations



TB = Door width
TH = Door height

Installation dimensions

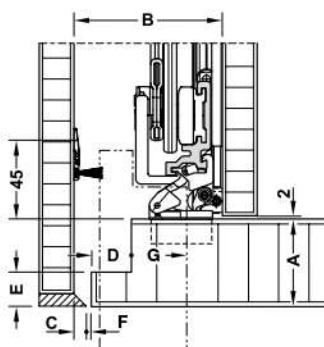


$T = TB - M + 73 \text{ mm}$
 $E = T - 73 \text{ mm}$
 $M = \text{door handle width}$
 $E = \text{max. push in depth measured from the inner side of closed door}$
 $T = \text{max. permitted distance for mounting the fitting measured from the inner side of closed door to rear edge of fitting. For deeper furniture cabinets: Install fitting at dim. T measured from the inner side of closed door}$

Calculation for wooden doors

For door weight (kg)	Dimension (mm)		
	TH	T	E
25	1250 - 1850	<650	<577
30	1851 - 2300	<900	<827
40	1851 - 2500	<900	<827
50	2301 - 2850	<900	<827

Pocket width and hinge location dimensions



Gap width F

Dimension (mm)	
F	G
2	29.5
3	28.5
4	27.5
5	26.5

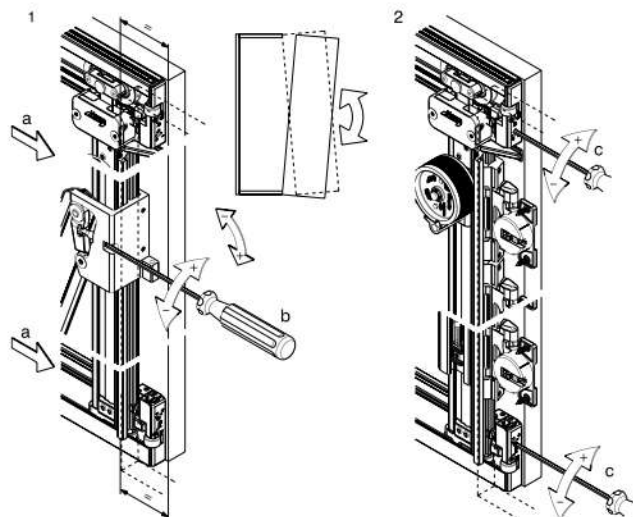
Rebate dimension

The rebate allows the use of wooden doors with thickness of >30-50 mm.

Dimension (mm)				
A	B	C	D	E
19-30	55	0	0	0
33	58	0	3	3
36	63	2	6	5
39	67	3	9	8
42	70	3	12	11
45	75	5	15	14
48	79	6	18	17
50	83	7	21	19

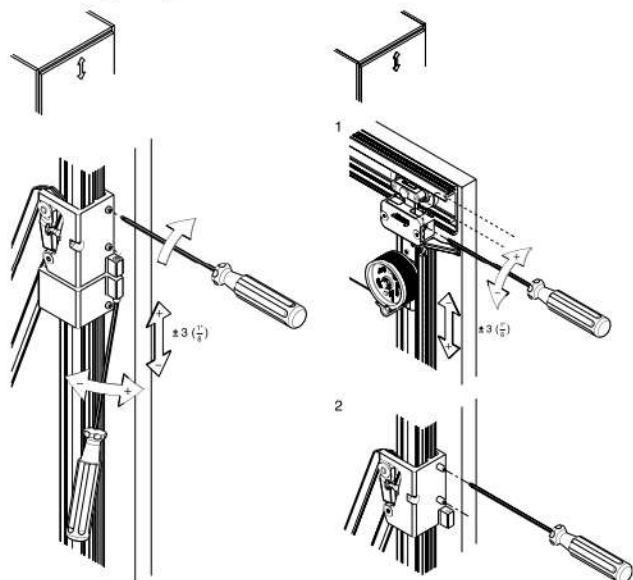
DOOR ADJUSTMENTS FROM CABINET FRONT

Door upright adjustment



Example: Concepta 40/50

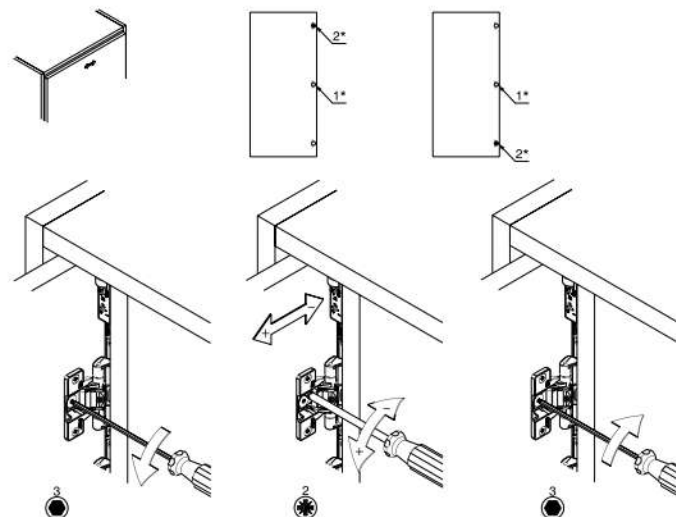
Door height adjustment



Concepta 25/30

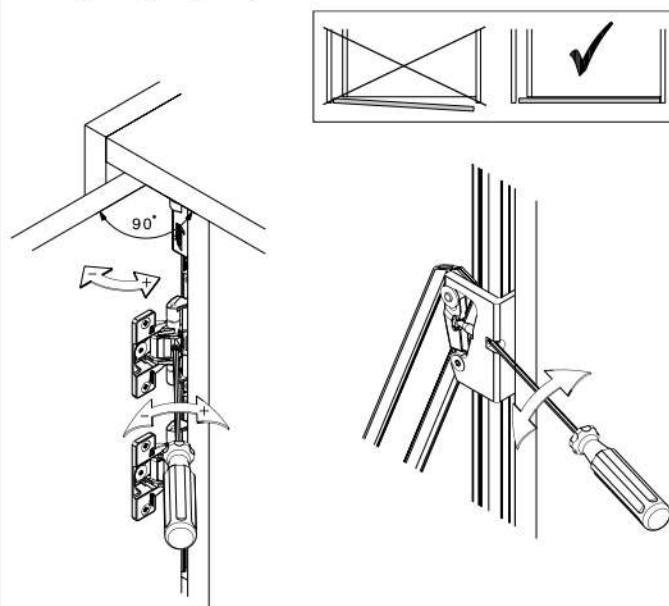
Concepta 40/50

Horizontal door gap adjustment

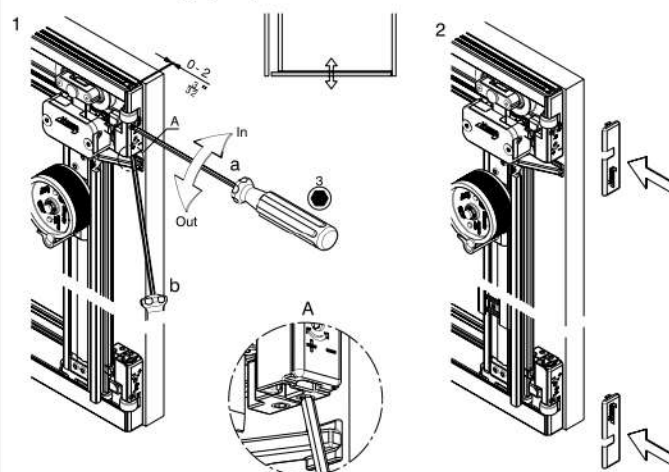


Concepta 40/50

Door opening angle adjustment

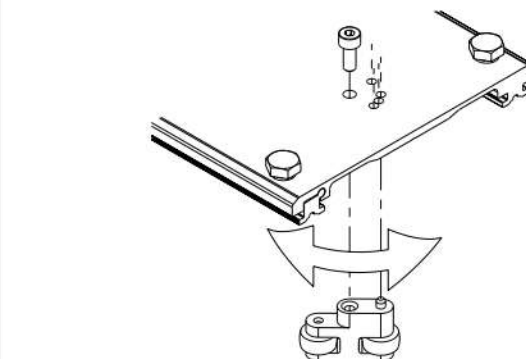


Door to cabinet gap adjustment



Example: Concepta 40/50

Door guide adjustment

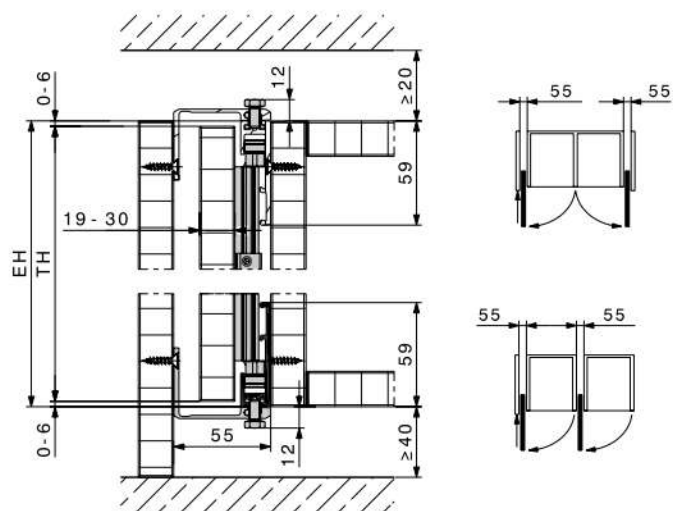
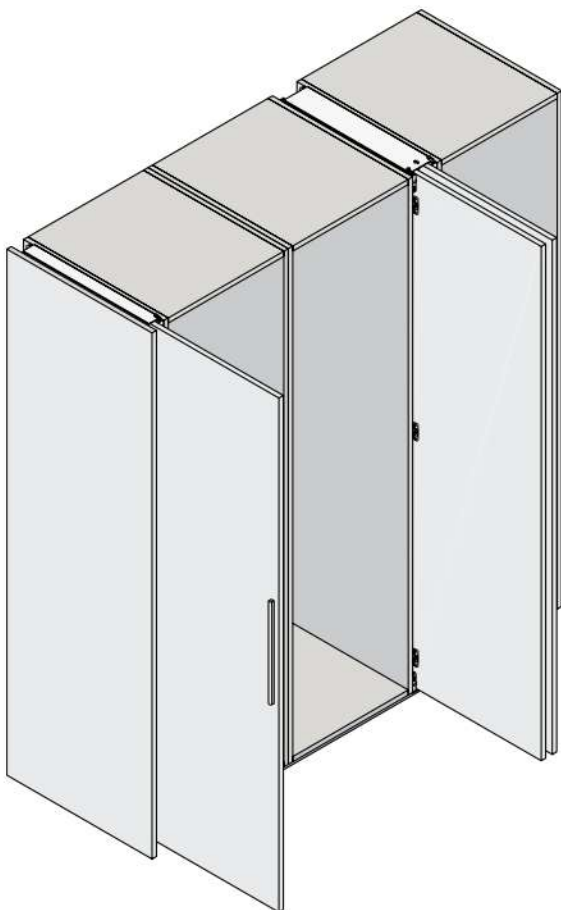
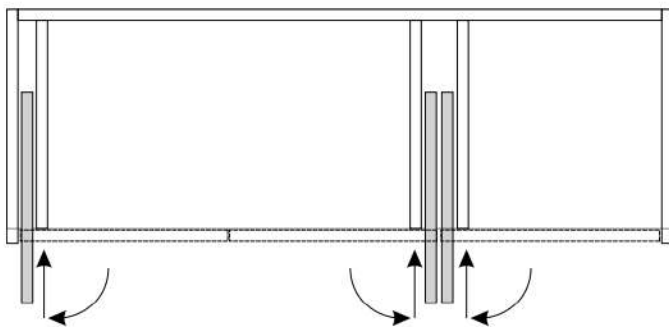
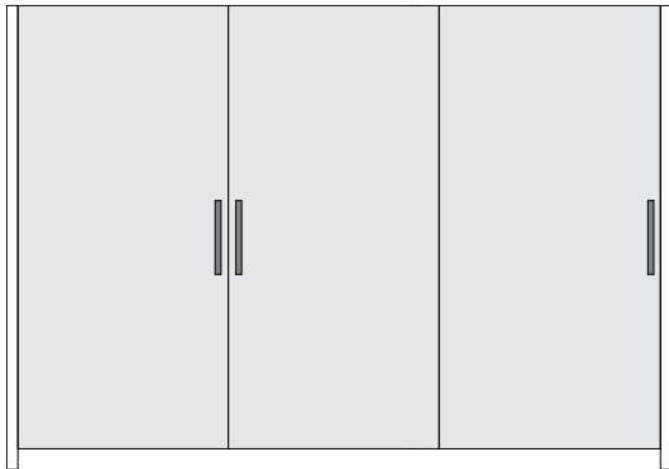


Example: Connecting profile, 110 mm

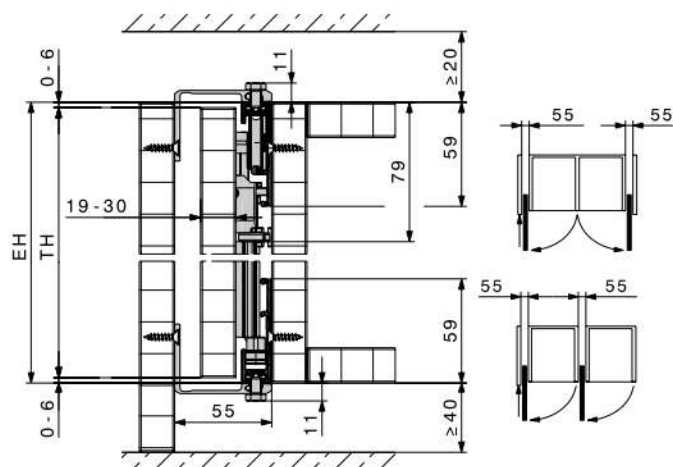
HAWA CONCEPTA 25/30/40/50 - PLANNING GUIDE



For overlay door applications



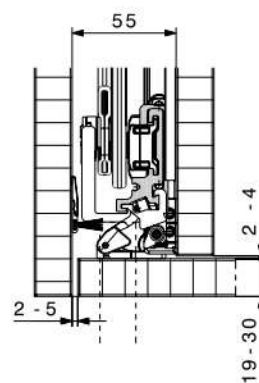
Concepta 25/30 with 55 mm connecting profiles



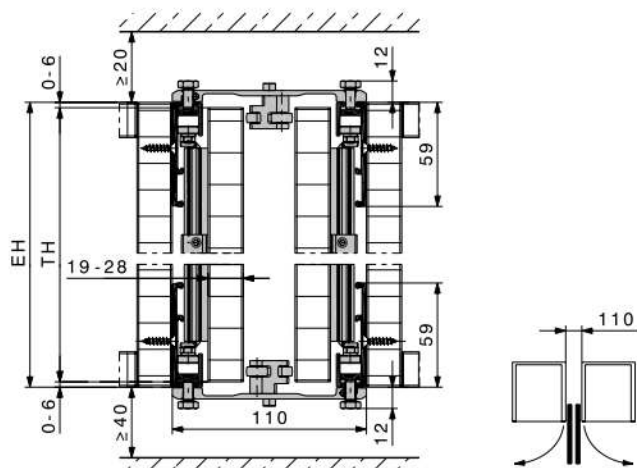
Concepta 40/50 with 55 mm connecting profiles

EH = Cabinet height

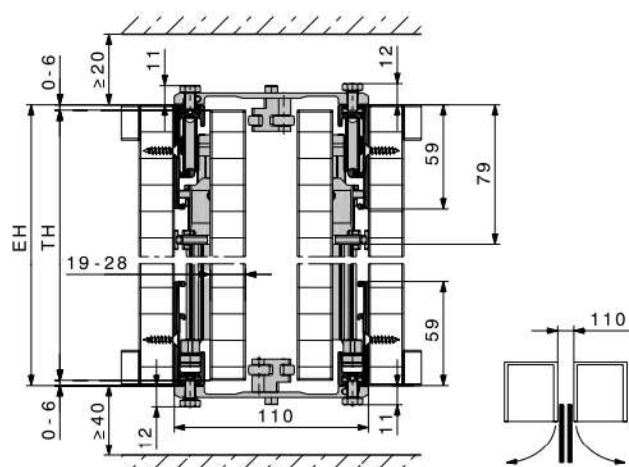
TH = Door height



One door with 55 mm pocket width

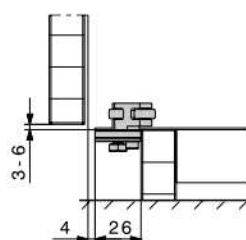


Concepta 25/30 with 110 mm connecting profiles

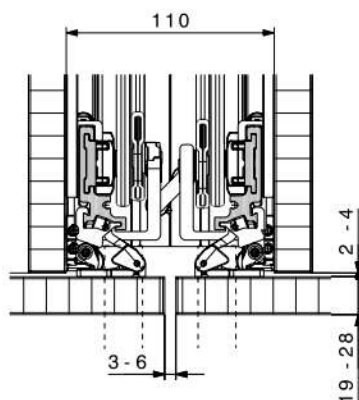


Concepta 40/50 with 110 mm connecting profiles

EH = Cabinet height
TH = Door height



Connecting profile, 110 mm x 26 mm for cabinets constructed with fixed plinth

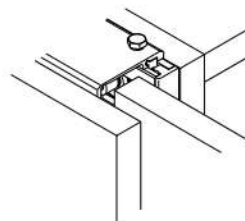


Two doors with 110 mm pocket width

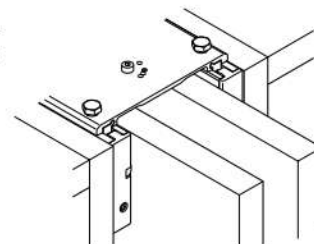
Connecting profiles

For quick and easy installation of pivot sliding doors that overlay the cabinet top and base panels (Forefront):

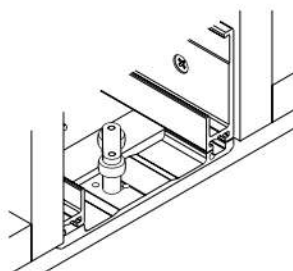
- > Join cabinet side panels/cabinets laterally
- > Slide connecting profile into the running and guide rails from the front and secure with screws from above
- > Height deviations of the external side or cabinet are compensated by the connector by up to ± 1.5 mm



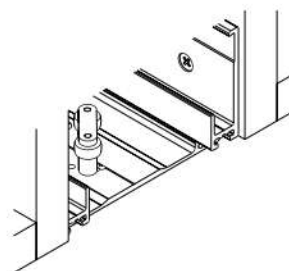
Connecting profile width 55 mm:
Recess for 1 pivot sliding door,
door thickness 19 - 30 mm



Connecting profile width 110 mm:
Recess for 2 pivot sliding doors,
door thickness 19 - 28 mm



Construction with fixed plinth



Construction with adjustable feet

FITTING SETS

	Door height (mm)	Door weight (kg)	Cat. No.
For 1 door	1250 - 1850	25	408.30.045
	1851 - 2300	30	408.30.046
	1851 - 2500	40	408.30.047
	2301 - 2850	50	408.30.048



Note:

Connecting profiles 55 mm / 110 mm must be ordered separately.

For door widths exceeding 600 mm

Please contact your Häfele representative

ACCESSORIES

Connecting profile	Width (mm)	Material	Colour/finish	Length (mm)	Cat. No
	55	Aluminium	Silver anodised	650	408.30.091
				900	408.30.092
	110	Aluminium	Silver anodised	650	408.30.093
				900	408.30.094
	110	Aluminium	Silver anodised	26	408.30.095

Packing: 1 piece



Order Reference:

Pocket for 1 pivot sliding door

Please order 2 x Cat. No. 408.30.091 or 408.30.092

Pocket for 2 pivot sliding door

For connecting cabinets with fixed plinth please order:

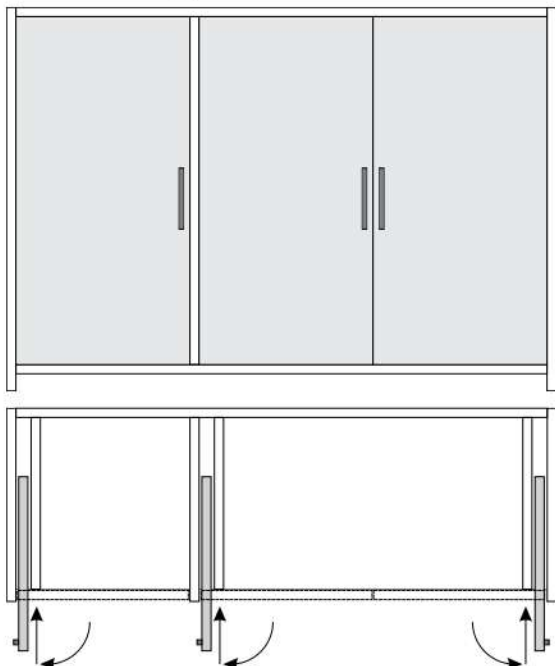
1 x Cat. No. 408.30.093 or 408.30.094 and 1 x Cat. No. 408.30.095

For connecting cabinets with adjusting feet please order:
2 x Cat. No. 408.30.093 or 408.30.094,

HAWA CONCEPTA 25/30/40/50 - PLANNING GUIDE

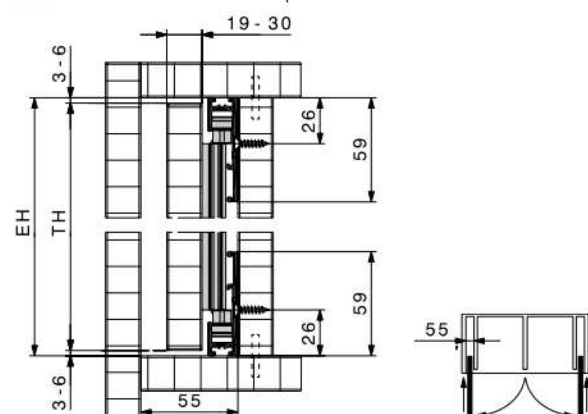


For inset door applications

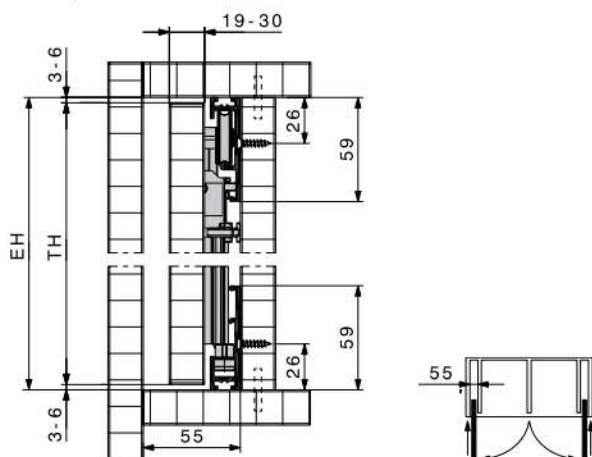


Note:

Concepta fittings installed for inset door applications must be fixed to a removable panel

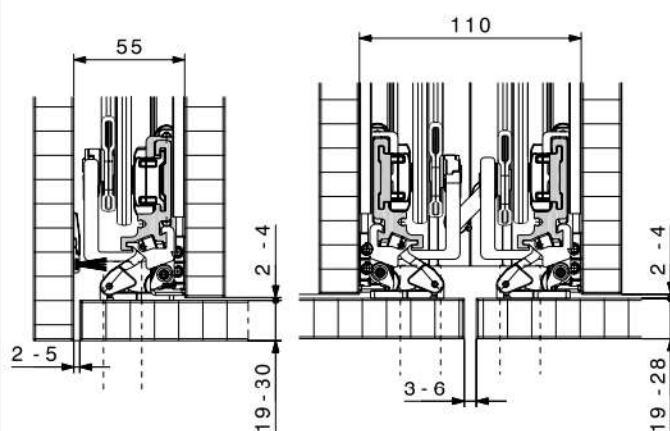
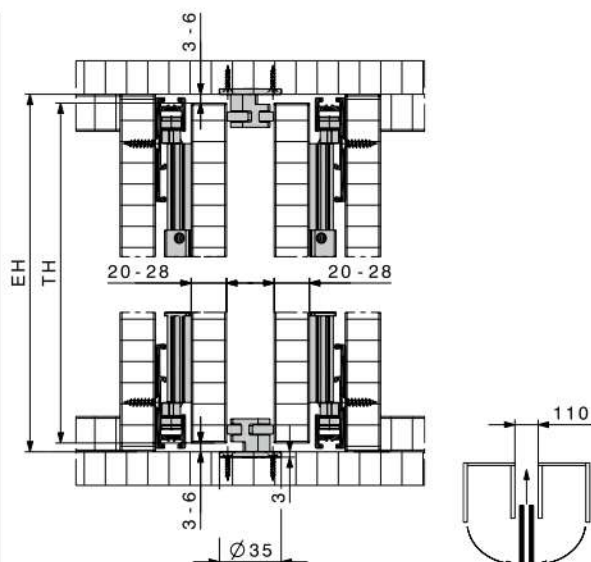


Concepta 25/30



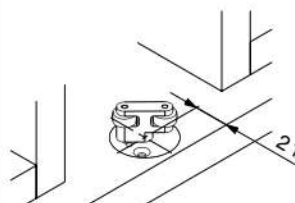
Concepta 40/50

EH = Cabinet height
TH = Door height



One door with 55 mm pocket width

Two doors with 110 mm pocket width



Guide for 2 doors, inset

FITTING SETS

	Door height (mm)	Door weight (kg)	Cat. No.
For 1 door	1250 - 1850	25	408.30.045
	1851 - 2300	30	408.30.046
	1851 - 2500	40	408.30.047
	2301 - 2850	50	408.30.048

Packing: 1 set

ACCESSORIES

	Cat. No.
Concepta guide for 2 doors, inset	408.30.295

Packing: 1 piece



Note:

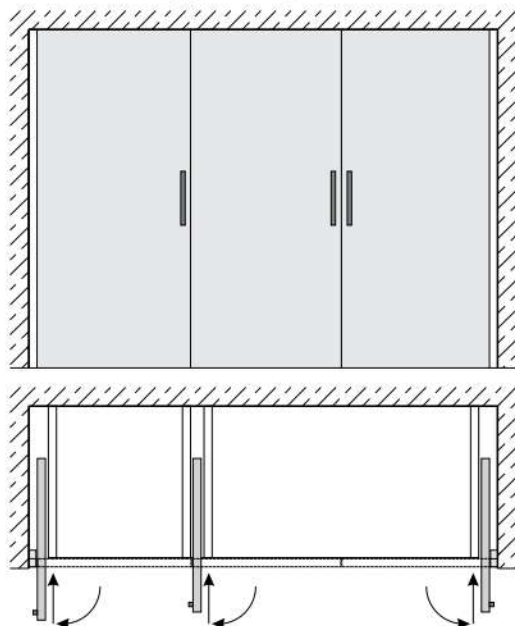
For door widths exceeding 600 mm

Please contact your Häfele representative

HAWA CONCEPTA 25/30/40/50 - PLANNING GUIDE

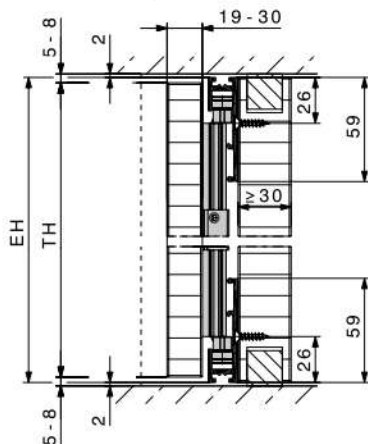


In wall recess applications, without cabinet base

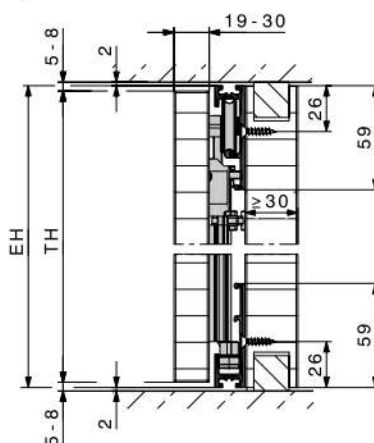


Note:

Concepta fittings installed for in wall recess applications must be fixed to a removable panel.
Removable panel thickness must be ≥ 30 mm

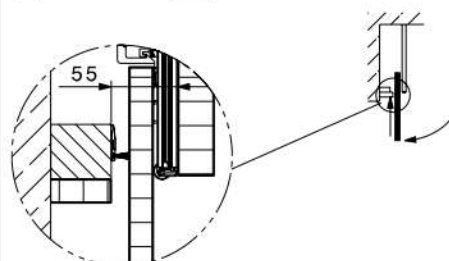
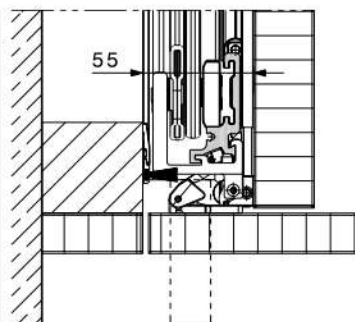


Concepta 25/30



Concepta 40/50

EH = Cabinet height
TH = Door height



Flush door positioning with magnetic centring parts

FITTING SETS

	Door height (mm)	Door weight (kg)	Cat. No.
For 1 door	1250 - 1850	25	408.30.045
	1851 - 2300	30	408.30.046
	1851 - 2500	40	408.30.047
	2301 - 2850	50	408.30.048

Packing: 1 set

ACCESSORIES

	Cat. No
Magnetic door centring part, including drilling jig, aluminium anodised	408.30.229

Packing: 1 piece



Note:

For door widths exceeding 600 mm
Please contact your Häfele representative