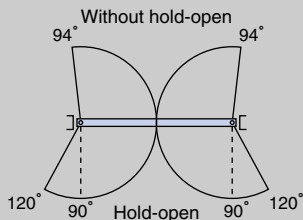
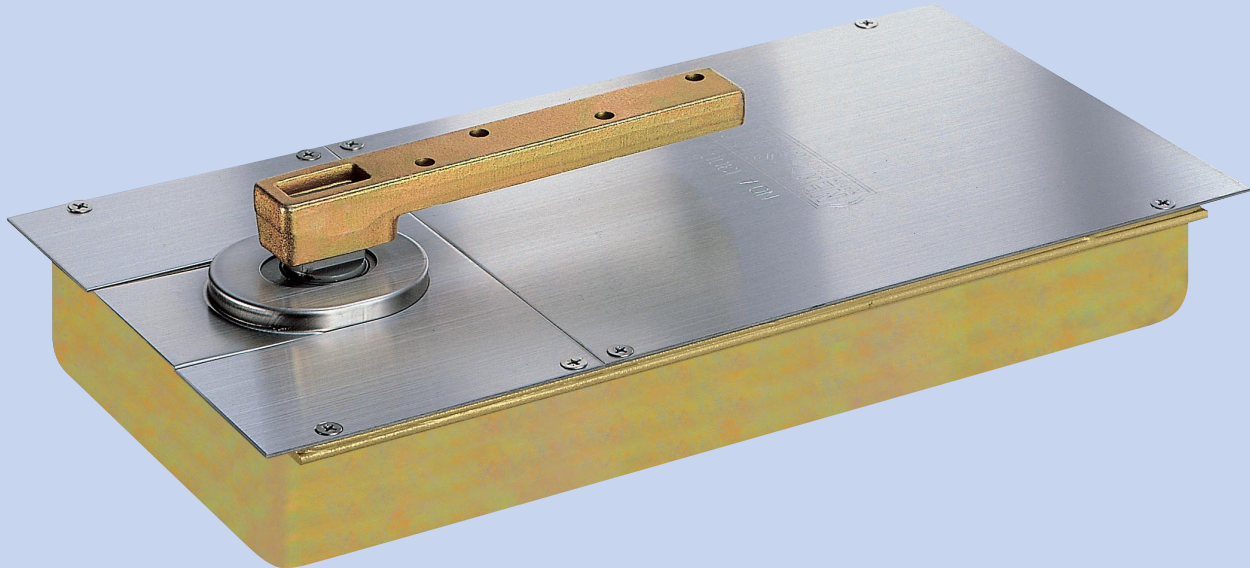


FLOOR HINGES

Patent No. 2695139

A-1300~1600

On/Off Selectable Hold-open
Center-Hung Floor Hinges for Inward and Outward Opening



On/Off Selectable 90° Hold-open
Without hold-open
94° inward and outward opening
Hold-open
90° hold-open
120° inward and outward opening

Note: The door-opening angle varies by selecting or unselecting the stop.

- The thickness of this thin model has been further reduced for installation on a thin slab.
- Alignment of the door is adjustable after hanging by making a simple adjustment to the main body alone.
- Two-valve function allows easy closing speed adjustment.
- On/Off Selectable Hold-open
Even after the door has been hung, exchanging the hold-open device can be made easily using a screwdriver only.
- Shipped with hold-open selected as factory preset.
- Type Z is also available, with which alignment can be adjusted by means of the top pivot.

Model Number		Applicable Door Dimensions DW×DH mm	Maximum Door Weight kg
Without Hold-open	With Hold-open		
	A-1300	950×2100	110
	A-1400	1050×2400	185
	A-1500	1400×2400	240
	A-1600	1800×2700	280
	A-1300 Z II	950×2100	110
	A-1400 Z II	1050×2400	185
	A-1500 Z III	1400×2400	240

(Note) • Floor hinges for stone tile flooring, floor hinges for carpeted flooring, and aqua hinges are available as well.

Adjustment Procedure

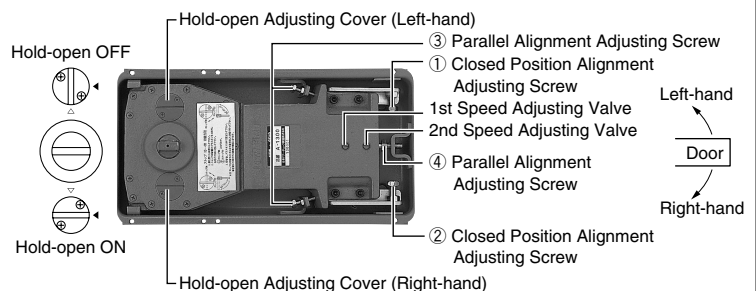
1. Selection of On/Off Selectable Hold-open Settings

Note: Make adjustments with door in closed position.

1. Remove the two Phillips-head screws on the hold-open cover and rotate the cover so that the groove aligns with the ◀ mark to activate or the △ mark to deactivate the hold-open.
2. Retighten the two Phillips-head screws after making the necessary adjustments.

IMPORTANT!

Adjustments made with door in open position will disable switching and may cause damage to the hinge.



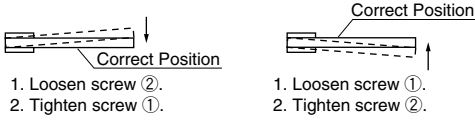
*An M8 each is used for ①, ②, and ④, and an M6 is used for ③.

The H(S)-1300·H(S)-1400 and the A-1300·A-1400 are different in cement casing.

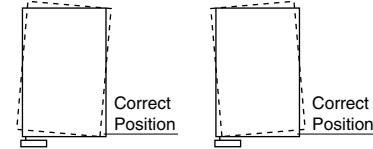
Adjustment Procedure

2. Closed Position Alignment

Loosen the parallel alignment adjusting screws ③ and ④. Then, proceed to adjust with closed position alignment adjusting screws ① and ②.

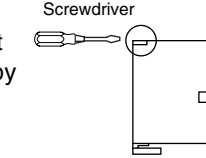


Parallel Alignment



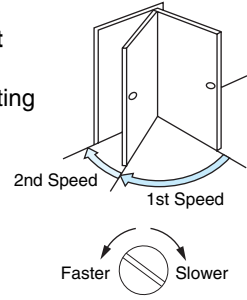
Note

When a Type Z Pivot is used, parallel alignment can be adjusted by means of the top pivot.

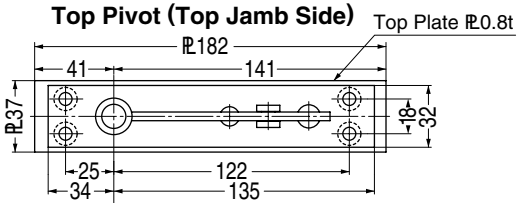


3. Closing Speed Adjustment

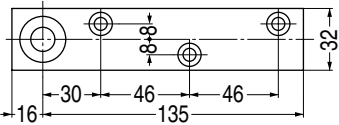
To adjust the closing speed, turn the closing speed adjusting valves to the right or left.



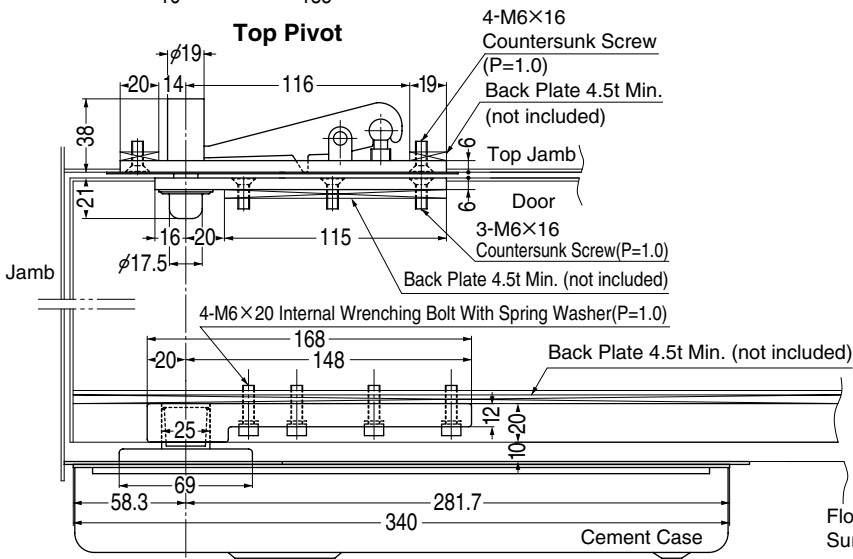
Top Pivot (Top Jamb Side)



Top Pivot (Door Side)

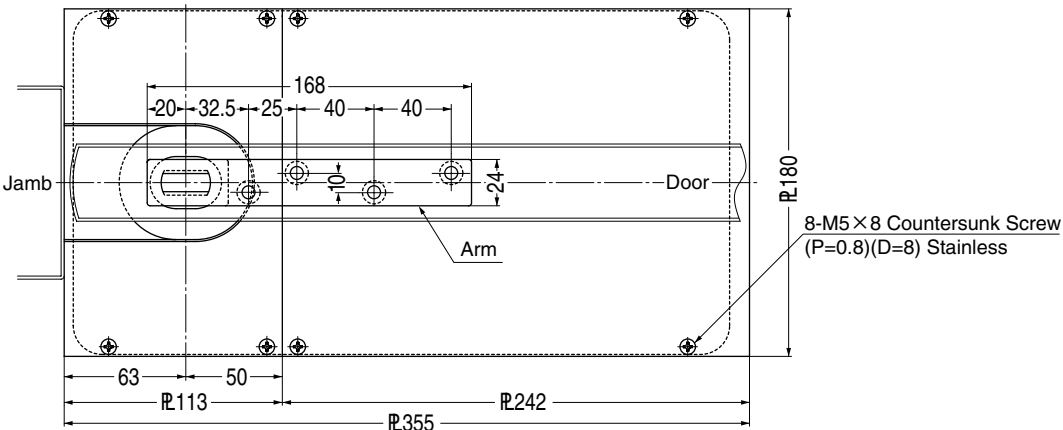
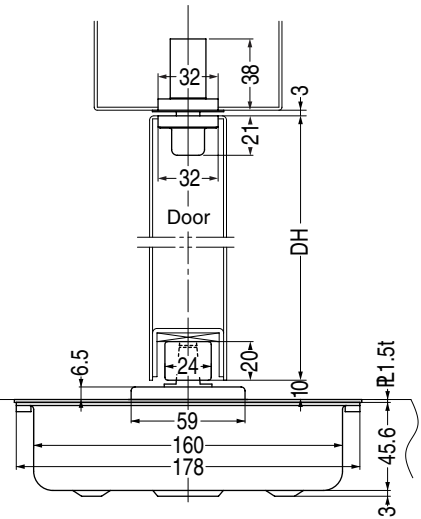


Top Pivot

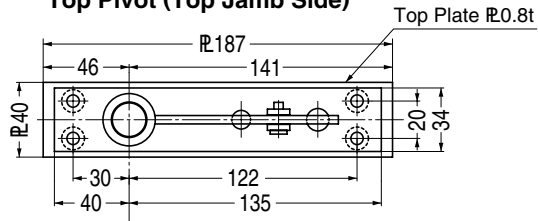


Without Hold-open	With Hold-open
A-1300(Z II)	
A-1400(Z II)	

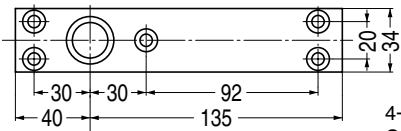
Refer to page 50 for the Type Z Top Pivot.



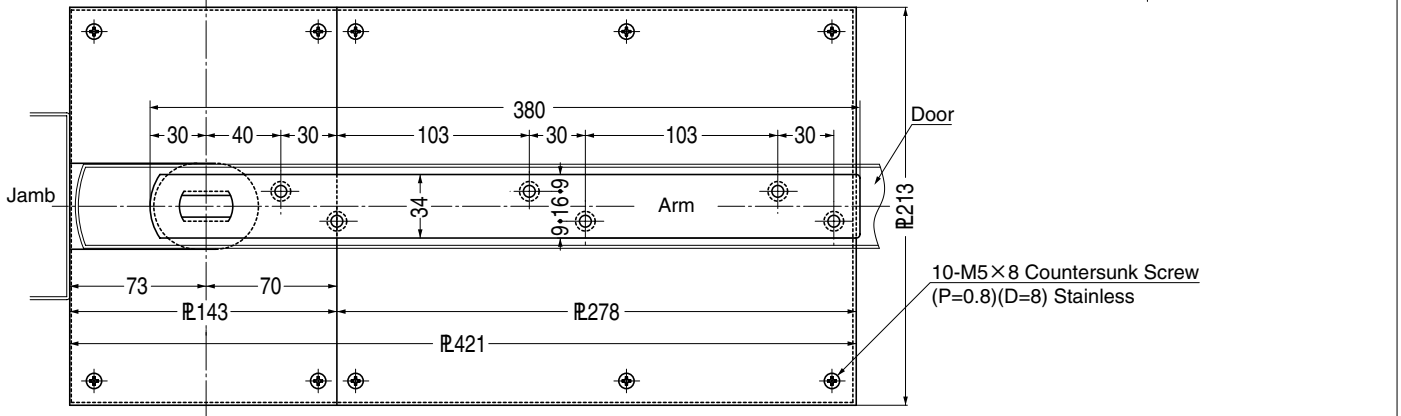
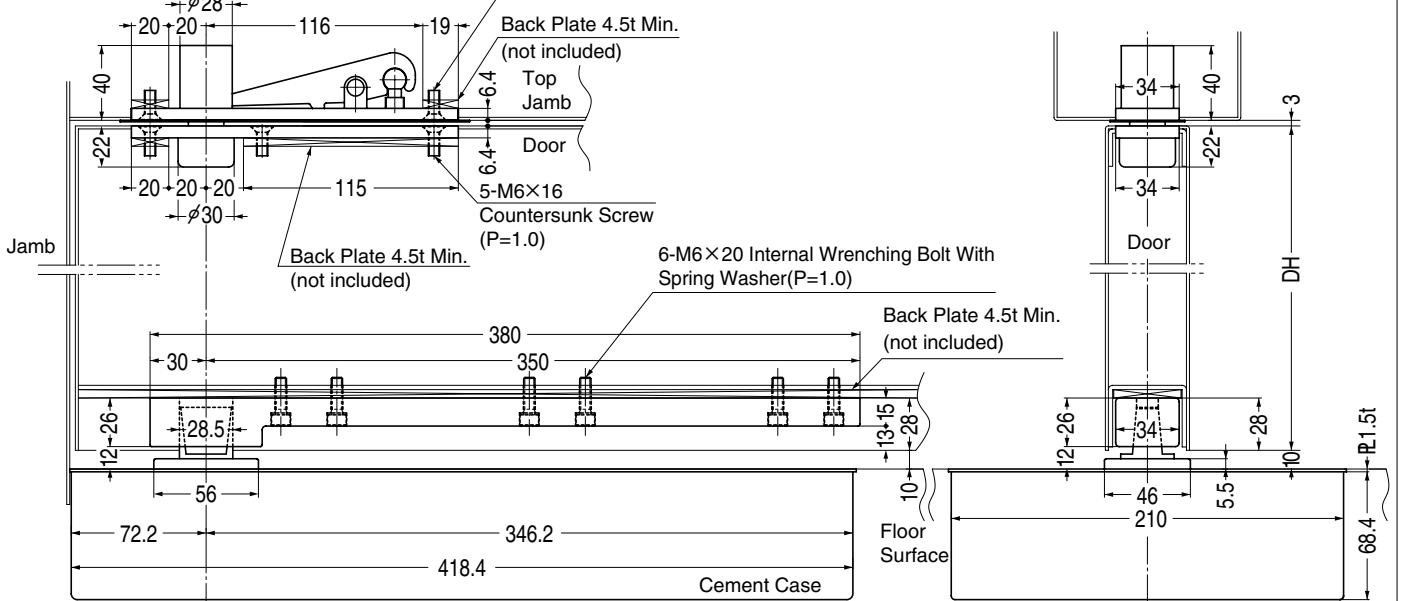
Top Pivot (Top Jamb Side)



Top Pivot (Door Side)



Top Pivot



Without Hold-open	With Hold-open
A-1500(ZIII)	
A-1600	

Refer to page 50 for the Type Z Top Pivot.