



NJ-76Q01

Two Way Travel Slides
180 pound class (80kgs)

Product Photo

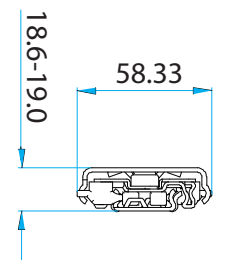


Features



Mounting | Side mount.
Side Clearance | 3/8" plus 1/64", minus 0 each side.
Height | 1-25/64" (35.3 mm).
Loading | 50 pound (22 kgs) class.
Size | 12" (300 mm) through 26" (650 mm) at 2" (50 mm) increment.
Feature | Low profile for shallow drawers, shelves or trays. Metal latch detent in/lock function in extended position for easy drawer removal and industrial cabinet applications.
Option | NJ23002-Metal latch positive stop. NJ21001-Plastic lever for positive stop.

Profile



Surface Treatment

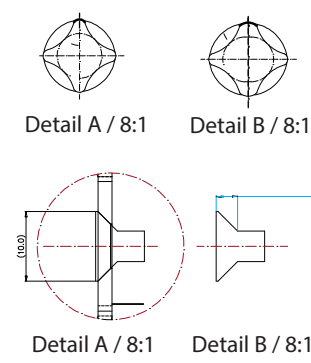
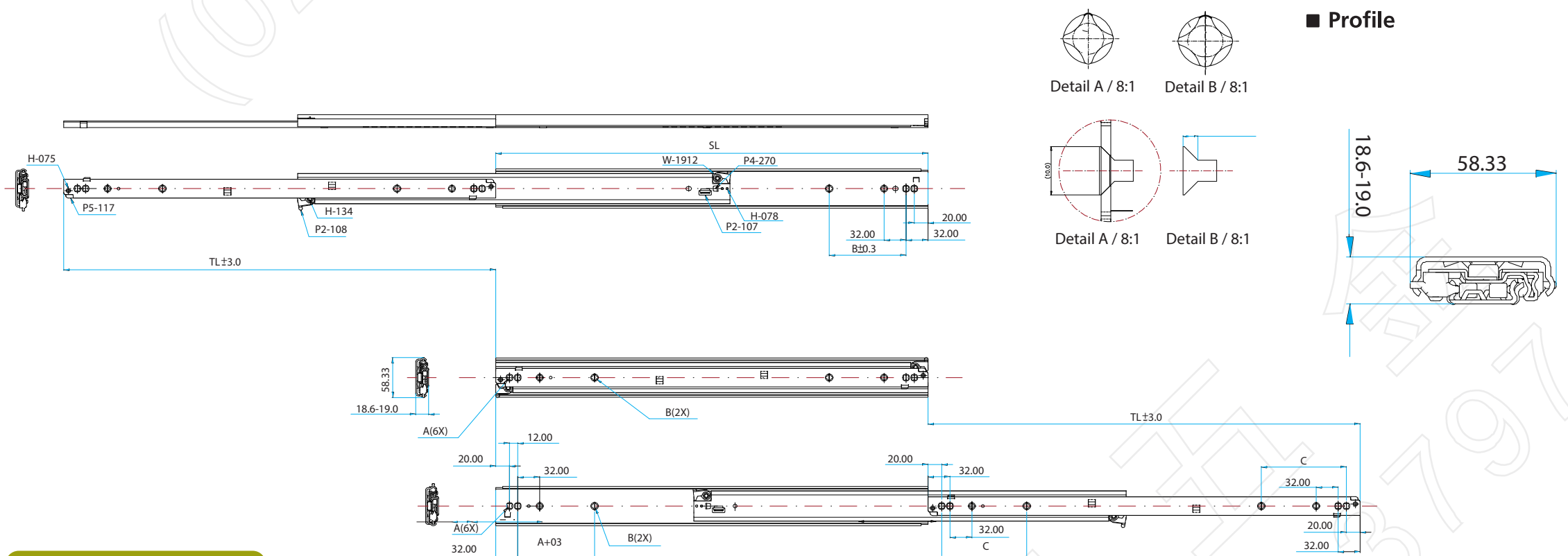
- Clear Zinc
- Black Zinc
- Black E. Coating
- White E Coating
- Stainless Steel
- Galvanized Steel

Packaging

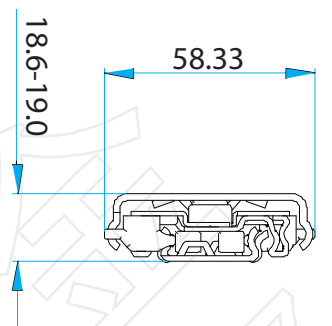
- Distribution / 25 pairs per box

*Box QTY might vary with different length, the info provided here is based on 18" (450 mm)

Drawing



Profile



Specification Table

SIZE	SL	TL	A	B	C
16" (400mm)	400.00	400.0			
18" (450mm)	450.00	450.0	128.00	128.00	
20" (500mm)	500.00	500.0	160.00	160.00	124.00
22" (550mm)	550.00	550.0	160.00	160.00	124.00
24" (600mm)	600.00	600.0	192.00	192.00	124.00
26" (650mm)	650.00	650.0	192.00	192.00	124.00
28" (700mm)	700.00	700.0	192.00	192.00	124.00
30" (750mm)	750.00	750.0	224.00	224.00	124.00
32" (800mm)	780.00	800.0	224.00	224.00	124.00

Installation Instructions

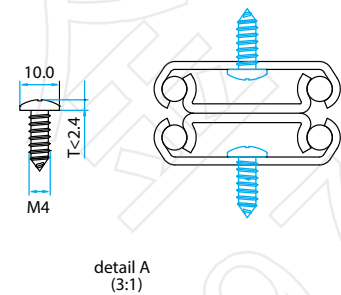
QUICK INSTALLATION GUIDE OF NJ-76Q01

Two Way Travel Slides, 180 pound (80kgs) loading.

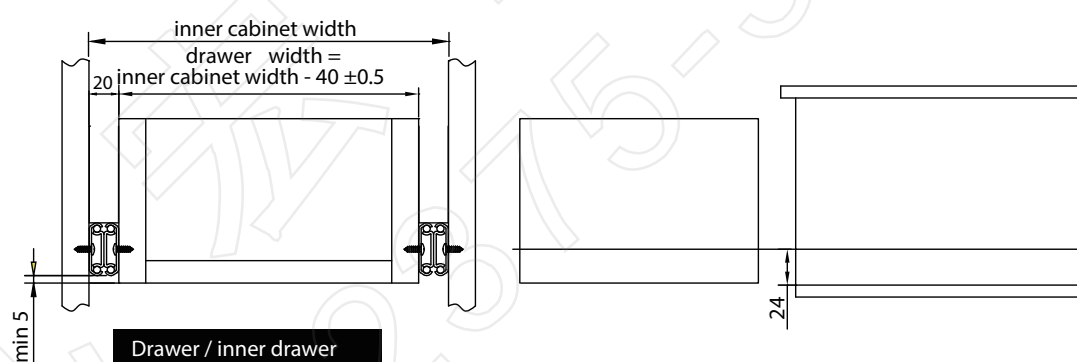
READ THE QUICK INSTALLATION GUIDE FIRST BEFORE INSTALLATION

Please use screw kit as included. Each side of slides requires at least 6 screws (3 on cabinet side, 3 for drawer).

Or you may use screws as the recommended dimensions (10mmx2.4mm)



Technical Specification of drawer and cabinets



The bottom of drawer slides must be 5mm above the bottom of drawer to ensure correct function.

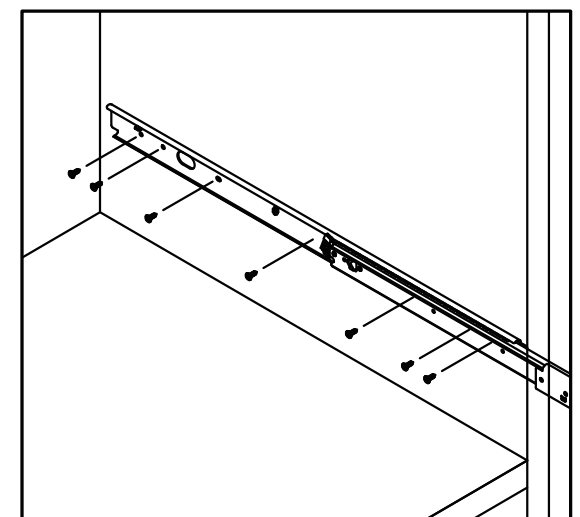
The center of drawer slides must be 24mm above the bottom of cabinet.

Install the drawer slides to the cabinet

To ensure the same length of extension from both sides, center the slide to the depth of the cabinet.

Install the slides to the cabinet with the provided screw kit. Each side requires at least 3 screws.

Please make sure the drawer slide on each side is parallel to each other.



Install the drawer slides to the drawer

Install the slides to the drawer with the provided screw kit.

Each side requires at least 3 screws. Please move the drawer back and forth to see if the drawer runs freely.

If not so, please check if drawer or cabinet is square, the slides are installed in a parallel manner or screws are tightened properly.

