

KINVARO

T-Slim lift-up flap fitting for wooden fronts (screw-mounted)



- Slim flap fitting for high design requirements and more storage space in the wall cabinet
- Low opening forces and multi-position stop
- Convenient adjustment of the spring force
- Fast, tool-free clip fitting of the front
- Flap with 3-dimensional adjustment of height ± 2.5 mm, side ± 2.0 mm, depth $+3.0$ mm / -1.0 mm
- No hinges fitted to the top panel
- 107 degrees opening angle
- Integrated, opening angle reduction clip with optional activation (75°)

- Three different power factors
- Can be used for flaps made from wood
- Cover caps and adapters in Stone, Ice and Silver (all cover caps can be painted)

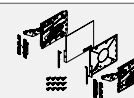
Available in two versions:

- With integrated damping (Soft-close, damper can be switched on/off)
- With integrated automatic opening system (Tipmatic Plus)

ORDER INFORMATION

Kinvaro T-Slim set for flaps made from wood

Set: Fitting (1x left/1x right), front connection (1x left/1x right), cover cap (3x left/3x right), screws (12x)



Power factor (LF)	Soft-close			Tipmatic Plus		
	Stone	Ice	Silver	Stone	Ice	Silver
250 – 550	F151149002	F151149004	F151149003	F151149011	F151149013	F151149012
500 – 1100	F151149005	F151149007	F151149006	F151149014	F151149016	F151149015
1000 – 2250	F151149008	F151149010	F151149009	F151149017	F151149019	F151149018

Power factor (LF) = flap height (mm) x (flap weight (kg) + 2 x handle weight (kg))

Cover caps can be painted

Adapter set for the screw-mounted version (1x left/1x right) incl. screws



Designation	Stone	Ice	Silver
Adapter set for screw-mounted version (1x left/1x right) for easy installation	F161149020	F161149022	F161149021

Adapter can be painted

Tipmatic Pin see page 60

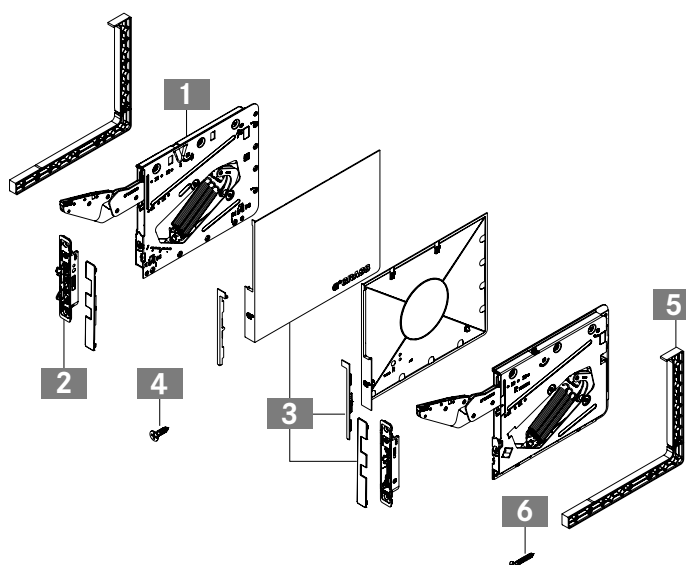


Kinvaro-T-Slim set consisting of:

- 1** Fitting left and right (1x)
- 2** Front connection left and right (1x)
- 3** Cover caps left and right (3x)
- 4** Screws (12x)
- Installation instructions (1x)

Adapter set consisting of:

- 5** Adapter left and right (1x)
- 6** Screws (8x)



Assembly aids	78
Kinvaro T-Slim adjustment options	62

Individual components	32

ASSEMBLY AND INSTALLATION INSTRUCTIONS

All dimensions in millimetres

<p>Required space</p>	<p>Tipmatic Pin</p>
<p>Side wall screw-on position</p> <p>Countersunk screw 3.5 x 25 mm</p>	<p>Front milling position</p> <p>Countersunk screw 3.5 x 13 mm</p>
<p>Calculation of power factor (LF)</p> <p>Flap height (mm) x {flap weight (kg) + 2 x handle weight (kg)}</p>	

CORNICE

Flap thickness (KLS)	Cabinet top panel (KOB)					
	16	18	19	20	22	24
16	67	74	77	80	87	94
18	60	67	70	73	80	87
19	57	64	67	70	77	84
20	54	60	63	67	73	80
21	50	56	60	63	69	76
22	47	53	57	60	66	73
24	40	46	50	53	60	67
26	33	40	43	46	53	60
32	12	19	22	25	32	38
Cornice (KP)						

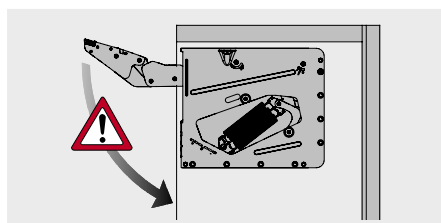
REVEAL

Flap thickness (KLS)	Front overlay, top (FAO)				
	15	17	19	21	22
16	1	1	1	1	1
18	1	1	1	1	1
19	1	1	1	1	1
20	1	1	1	1	1
21	1	1	1	1	1
22	1	1	1	1	1
24	1.5	1	1	1	1
26	3	2.5	1.5	1	1
32	8	7	6	5.5	5
Reveal (F)					

FLAP WEIGHT

Flap height (KLH)	Power factor (LF)		
	250 - 550	500 - 1100	1000 - 2250
200	1.3 - 2.8	2.5 - 5.5	5.0 - 11.3
250	1.0 - 2.2	2.0 - 4.4	4.0 - 9.0
300	0.8 - 1.8	1.7 - 3.7	3.3 - 7.5
350	0.7 - 1.6	1.4 - 3.1	2.9 - 6.4
400	0.6 - 1.4	1.3 - 2.8	2.5 - 5.6
450	0.6 - 1.2	1.1 - 2.4	2.2 - 5.0
500	0.5 - 1.1	1.0 - 2.2	2.0 - 4.5
550	0.5 - 1.0	0.9 - 2.0	1.8 - 4.1
Flap weight in kg			

WARNING



Important!
Caution - risk of injury!
Fitting is spring-tensioned!

LEGEND

F	Reveal
FAO	Front overlay, top
FAS	Front overlay, side
FH	Front height
KB	Cabinet width
KLS	Flap thickness
KOB	Cabinet top panel
KP	Cornice
LF	Power factor

KINVARO

T-Slim lift-up flap fitting for wide wooden fronts (screw-mounted)



- Slim flap fitting for high design requirements and more storage space in the wall cabinet
- Additional fitting for wide fronts
- Low opening forces and multi-position stop
- Convenient adjustment of the spring force
- Fast, tool-free clip fitting of the front
- Flap with 3-dimensional adjustment of height ± 2.5 mm, side ± 2.0 mm, depth $+3.0$ mm / -1.0 mm
- No hinges fitted to the top panel
- 107 degrees opening angle

- Integrated, opening angle reduction clip with optional activation (75°)
- Can be used for flaps made from wood
- Cover caps and adapters in Stone, Ice and Silver (all cover caps can be painted)

Available in two versions:

- With integrated damping (Soft-close, damper can be switched on/off)
- With integrated automatic opening system (Tipmatic Plus)

ORDER INFORMATION

Kinvaro T-Slim set for flaps made from wood

Set: Fitting (1x left/2x right), front connection (1x left/2x right), cover cap (3x left/6x right), screws (18x)



Power factor (LF)	Soft-close			Tipmatic Plus		
	Stone	Ice	Silver	Stone	Ice	Silver
1500 – 3375	F151149027	F151149029	F151149028	F151149024	F151149026	F151149025

Power factor (LF) = flap height (mm) x (flap weight (kg) + 2 x handle weight (kg))

Cover caps can be painted

Adapter set for the screw-mounted version (1x left/1x right) incl. screws



Designation	Stone	Ice	Silver
Adapter set for screw-mounted version (1x left/1x right) for easy installation	F161149020	F161149022	F161149021

Adapter can be painted

Tipmatic Pin see page 60

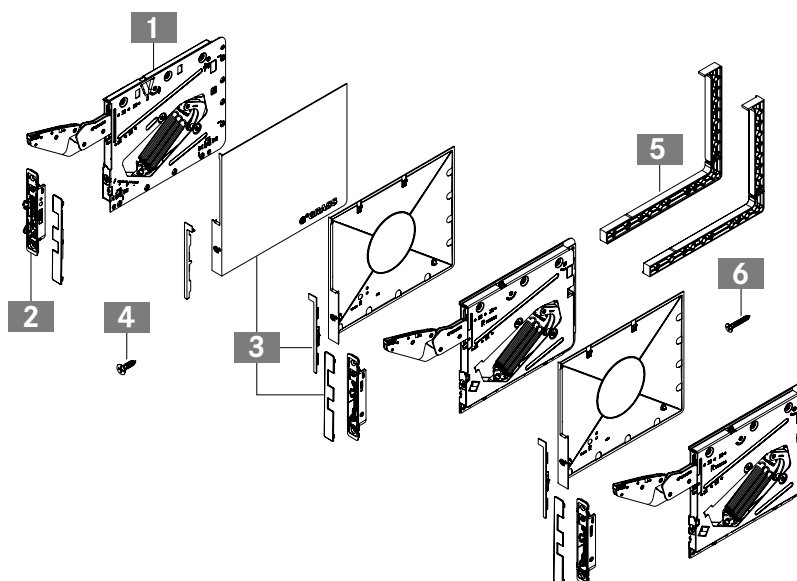


Kinvaro-T-Slim set consisting of:

- 1 Fitting left (1x) and right (2x)
 - 2 Front connection left (1x) and right (2x)
 - 3 Cover caps left (3x) and right (6x)
 - 4 Screws (18x)
- Installation instructions (1x)

Adapter set consisting of:

- 5 Adapter left and right (1x)
- 6 Screws (8x)



Assembly aids	78
Kinvaro T-Slim adjustment options	62

Individual components	32

ASSEMBLY AND INSTALLATION INSTRUCTIONS

All dimensions in millimetres

<p>Required space</p>	<p>Tipmatic Pin</p>
<p>Side wall screw-on position</p> <p>Countersunk screw 3.5 x 25 mm</p>	<p>Front milling position</p> <p>Countersunk screw 3.5 x 13 mm</p>
<p>Calculation of power factor (LF) Flap height (mm) x {flap weight (kg) + 2 x handle weight (kg)}</p>	

CORNICE

Cabinet top panel (KOB)	
Flap thickness (KLS)	Cornice (KP)
16	67
18	60
19	57
20	54
21	50
22	47
24	40
26	33
32	12

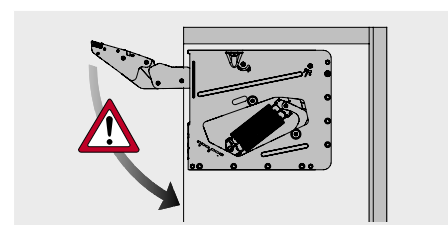
REVEAL

Front overlay, top (FAO)	
Flap thickness (KLS)	Reveal (F)
16	1
18	1
19	1
20	1
21	1
22	1
24	1.5
26	3
32	8

FLAP WEIGHT

Power factor (LF)	
Flap height (KLH)	Flap weight in kg
200	7.5 - 16.9
250	6.0 - 13.5
300	5.0 - 11.3
350	4.3 - 9.6
400	3.8 - 8.4
450	3.3 - 7.5
500	3.0 - 6.8
550	2.7 - 6.1

WARNING



Important!
Caution - risk of injury!
Fitting is spring-tensioned!

LEGEND

F	Reveal
FAO	Front overlay, top
FAS	Front overlay, side
FH	Front height
KB	Cabinet width
KLS	Flap thickness
KOB	Cabinet top panel
KP	Cornice
LF	Power factor

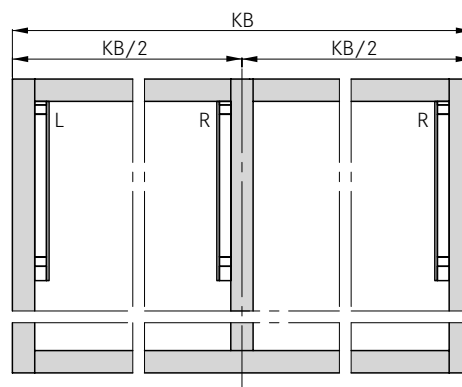
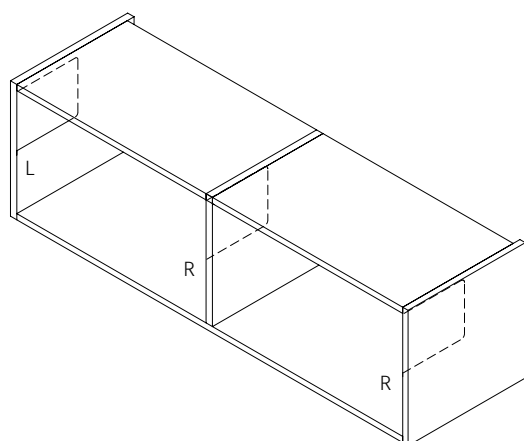
KINVARO

T-Slim lift-up flap fitting for wide wooden fronts (screw-mounted)

ASSEMBLY AND INSTALLATION INSTRUCTIONS

All dimensions in millimetres

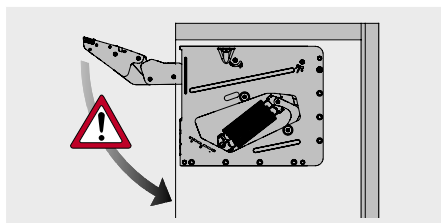
Position for third fitting



Assembly aids	78
Kinvaro T-Slim adjustment options	62

Individual components	32

WARNING



Important!
Caution - risk of injury!
Fitting is spring-tensioned!

LEGEND

KB Cabinet width
L/R Left/right